

FOR THE BEST SOLUTION!

Mitsubishi Chemical Logistics Corporation

1-1-30, Shibadaimon, Minato-ku, Tokyo 105-0012, Japan
www.mclc.co.jp/english



Mitsubishi Chemical Logistics Corporation (“MCLC”) will provide customers with “safety, sureness and higher efficiency” through its integrated logistics in Japan and overseas.



FOR THE BEST SOLUTION!

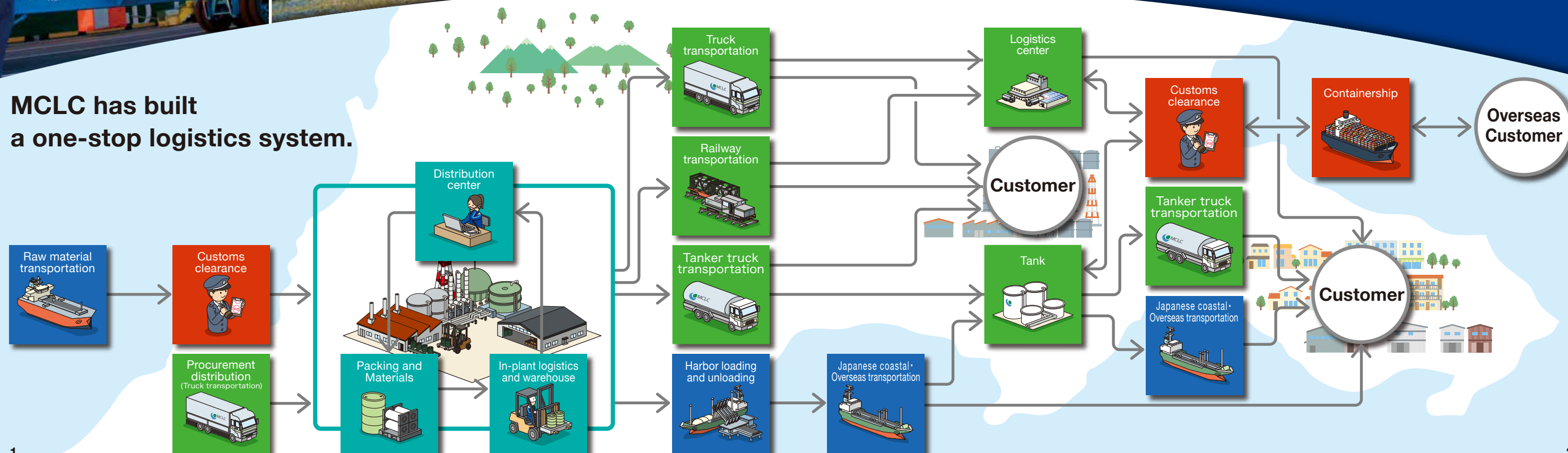
Our Philosophy

“As a reliable solutions provider, Mitsubishi Chemical Logistics Corporation creates valuable logistics (KAITEKI Logistics) by contributing to the growth of our customer’s businesses and society at large,”

What is KAITEKI?

We lead with innovative solutions to achieve KAITEKI, the well-being of people and the planet.

MCLC has built a one-stop logistics system.



We are proposing
tailor-made logistics
solutions.

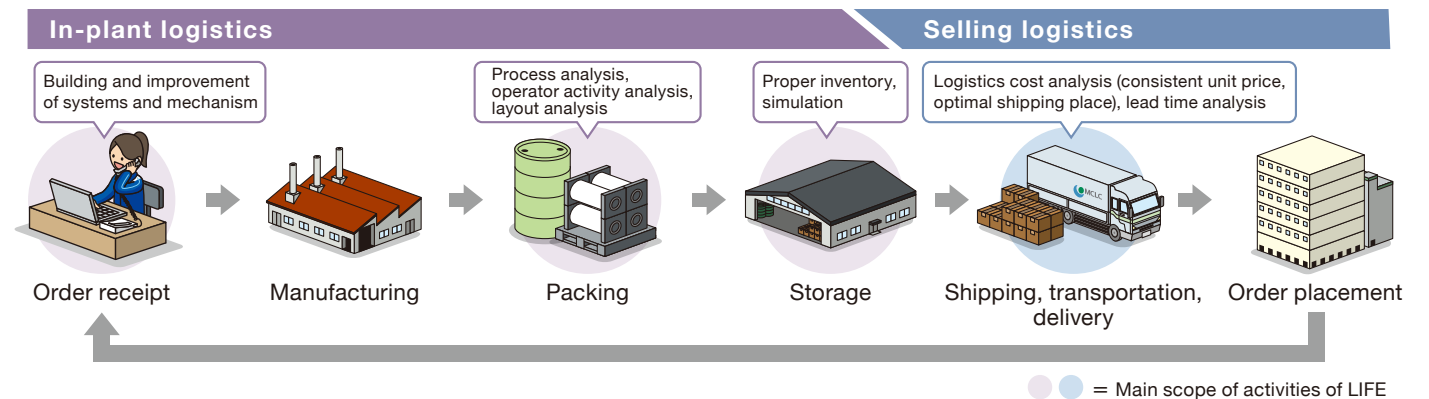
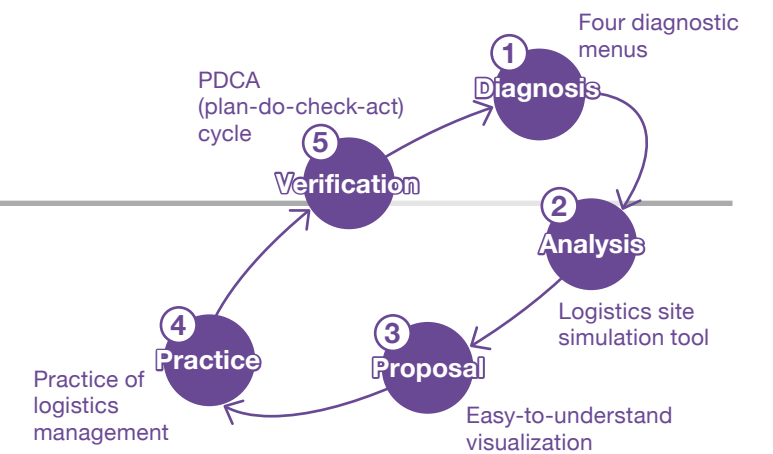
SOLUTION 1

Solving customers' logistics problems.

LIFE

Logistics Innovation
For Efficiency

We propose plans for improvement by identifying and analyzing problems, making excellent use of the latest methods for higher efficiency and focusing on eliminating waste and loss in all logistics processes from order receipt to product delivery.

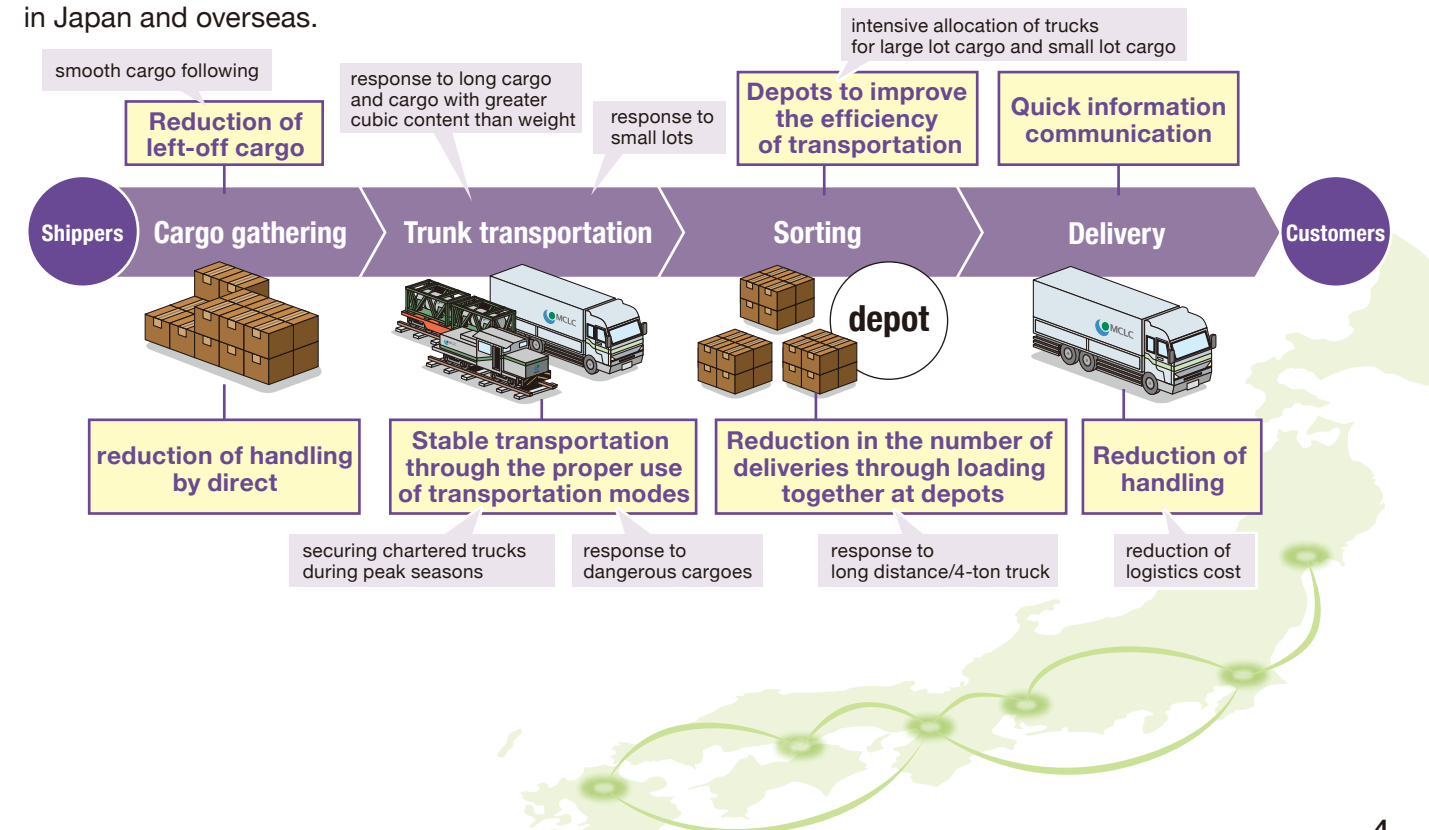


SOLUTION 2

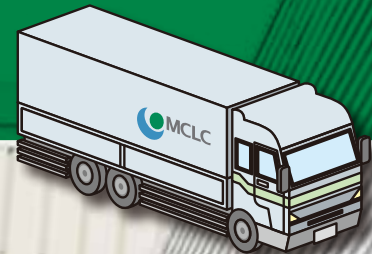
Responding to all logistics needs.

Trunk line/ network systems

Our response is fine-tuned for stability of transportation, quality improvement, cost reduction, and environmental awareness, taking advantage of the economies of scale of our integrated logistics in Japan and overseas.



Overland transportation



FOR THE BEST SOLUTION !



Overland transportation

Overland transportation

Proposing optimal transportation plans matching to needs.

We propose optimal transportation plans from a wide range of modes, achieving safe, quick and secure delivery. Efficient transportation is achieved with our services, which combine the truck transportation with the door-to-door delivery convenience, tanker truck transportation with extensive capacity such as petrochemical products and other cargoes and the railway transportation with mass and inexpensive capacity.



Warehousing

Integrated logistics system that combines transportation and delivery.

We integrate safe and secure storage systems with optimal transportation and delivery services. With our established integrated logistics systems covering customs clearance, storage, logistics processing and transportation/delivery, we provide a complete arrangement to meet diverse needs as a logistics base for customers.



Nationwide network and transportation capacity that will accelerate customers' business.

We have 40 business offices and more than 250 warehouse bases all over Japan and transportation capacity of around 20,000 tons a day. Based on these economies of scale, we have a strong and extensive track record that even covers special fields such as tank yards and in-plant logistics. We support customers' business by proposing and practicing optimal logistics systems for customers.



Tank yards

The most advanced facilities and the highest level security management.

To store every kind of chemical products, we provide the most advanced facilities and the highest level security management. With our own tank yards and partners' tanks, we respond the needs of customers as storage and delivery bases for a wide range of products and raw materials.



In-plant logistics

Consulting on all aspects of logistics in production process.

Working with customers from the planning stage of production lines, we propose efficient packing, storage and shipping operations. To meet ever-diversifying and sophisticated needs, we offer consulting services and design total logistics systems that range from packing to shipping and storage, then achieving cost reduction and efficiency.



We are responding the expectations of our customers!

Responsibility of engaging in transportation and self-confidence of supporting industries

Sales Division 1
Solution Business & Sales Department
Nahoko Akutsu

Delays in transportation can cause problems for customers, such as plant shutdowns. In the past, when ferryboat transportation was delayed due to bad weather, we delivered cargo to the customer without delay by shifting to railway and vehicles, and received a compliment from the shipper, "That is just what would expect of MCLC." We approach transportation with responsibility and self-confidence in supporting Japanese industry.



Marine transportation



Marine transportation

Linking the world with marine transportation.

As specialists in marine transportation, we have been developing our expertise since 1968. Nowadays, we transport yearly about 5 million tons of petrochemical products. We link the world with Japanese and overseas marine transportation to support the daily lives of people, giving the highest priority to the environment, safety and security.



Japanese coastal transportation

Various kinds of marine transportation.

We provide Japanese marine transportation services to contribute the business of customers with various kinds of ships, including mainly tankers that transport petrochemical products, and general cargo ships. Particularly in the traffic volume of liquid petrochemical products, we are one of the industry leaders and make a significant contribution to the stability of people's lives.

Overseas transportation

Responding to global needs.

We transport petroleum and petrochemical products, mainly in dynamic Asia area. Placing a particular focus on Southeast Asia, a region to be expected continued economic growth, we provide transportation services by using chemical tankers.

Linking the world with safe, secure and environmentally friendly marine transportation.

With the various lineups of vessels we own and operate, together with the considerable expertise we have cultivated in marine transportation of petrochemicals and other products, we closely respond to the needs of customers, using our original transportation management system. We will provide stable, efficient and eco-friendly marine transportation that achieves a maritime modal shift, including reduction of CO₂ emission and cost.



Ship Management

Enhancement of ships and safety management systems.

Introducing the "certified ships system," our own safety standard, we provide high-quality logistics services that win the trust of customers. To meet society's demand for safety and security, we are enhancing our safety management systems every day.



MCLC NEWS

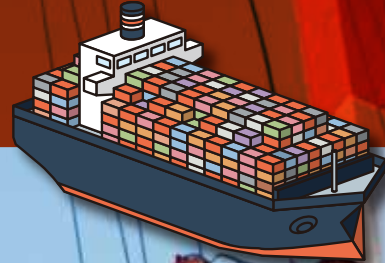
Actively introducing the latest energy-saving technologies.

As an initiative to reduce our environmental impact, we are constantly introducing the latest energy-saving technologies when we build or replace ships. We have been improving fuel efficiency and reducing CO₂ emissions by adopting dual counter-rotating propellers, the Friend Fin, and carbon fiber-reinforced plastic propellers to achieve eco-friendly transportation.

"Carbon fiber-reinforced plastic propellers"



International Logistics



International Container Transportation

Providing competitive FCL (Full Container Load) and LCL (Less than Container Load) transportation.

We propose integrated transportation from container loading to delivery to the user-silo through international marine transportation by building cooperative relationships with the manufacturers of sea bulk liners based on our expertise and experience of many years in the international maritime transportation of chemical products (resin and powder) using sea bulk liners.

We also provide safe and secure transportation that makes full use of our original management techniques and the MCLC specs by using ISO tank containers tailored the characteristics of products.



SEA/BULK CONTAINER



MCLC ISO CONTAINER

Providing high-quality, integrated, door-to-door logistics globally.

We introduce the “safe, secure and efficient” logistics quality of MCLC, which we have cultivated in the transportation of chemical products and dangerous goods, to the world. We are responding to the needs of customers with a broad lineup that includes air transportation, with container transportation as the core. We provide integrated door-to-door logistics with proposal-based solutions from the customer’s perspective.



Overseas bases

Integrated logistics services of Japan quality.

We have developed a logistics business in Asia on the basis of the products of companies in the Mitsubishi Chemical Group. Taking advantage of the logistics expertise we have developed in Japan, we provide good quality and inexpensive integrated logistics services in accordance with the circumstances in each country.



Siam Chemical Logistics Co.,Ltd.



PT. Lintas Buana Kasei
PT. Dia Logistics Indonesia

Thailand
established in 1998

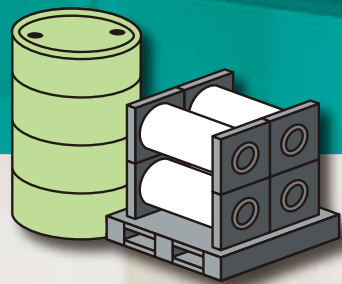
Vietnam
established in 2017



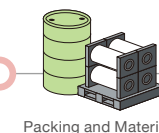
Vietnam Chemical Logistics Co.,Ltd.

Indonesia
established in 1996

Packing and Materials



FOR THE BEST SOLUTION !



Procurement of packing materials

Integrated supply chain logistics based on the procurement of packing materials.

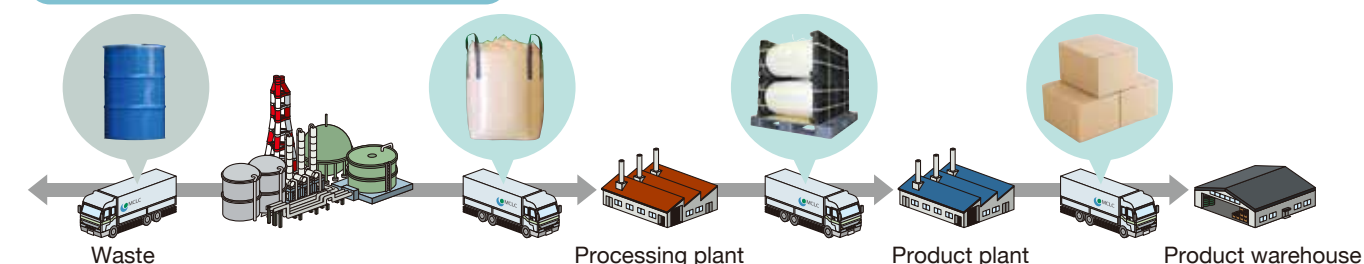
We are building an integrated supply chain logistics that connects suppliers and customers by handling the packing and the procurement of materials on our own and providing optimal support services for the production process. We aim to make proposals that include planning, in addition to all logistics management services, until the products arrive at customers' facilities.

Environmental Protection

Proposing eco-friendly packing and materials.

In terms of the packing and materials necessary to transport goods, the era of focusing on convenience right now has come to an end. Instead, greater environmental consideration is required, taking into account the next process, the next customer, recycling and final disposal. In addition to logistics, we will propose higher quality packing and materials at a fair price.

Integrated supply chain logistics



Sustainable and integrated logistics that begin with packing and materials.

MCLC, which aims to provide integrated and consistent logistics, starts its work with proposals concerning the packing and materials themselves, seeking to offer safer, securer and more efficient logistics services. We provide optimal logistics tailored to the needs of customers by developing sustainable packing and materials, including "Endwall," especially for chemical products and high-functional materials.



Solution by Endwall

Groundbreaking suspended packing that does not harm films.

Endwall is a groundbreaking packing material that suspends films, which are used for various products essential for our daily lives. It is an eco-friendly packing material because it is recyclable without creating paper powder and wood shavings, as it is made of plastic and prevents damage that would be generated in trefoil formation and vertical packing.

Advantages of Endwall

1 Clean

Clean and no concerns about paper powder, wood shavings and fungus, etc.

2 Reduction of waste

Endwall reduces waste because it is recyclable.

3 Stacking is possible

Stacking is possible using a lock system.

4 Contents are visible

Because the products are visible, even more care is taken in transportation, so that the number of troubles and claims will decline.



5 Safe

Endwall can be stored and transported safely by trucks or in a warehouse.

6 Cost savings

Materials and packing work are reduced compared to other packing methods, which will lead to cost savings.

7 Size availability

Able to respond to a wide range of sizes up to a maximum winding diameter of 290 mm to 800 mm.



We are meeting the needs of customers!

Endwall, ideal for the packing of films

Mitsubishi Chemical Corporation
Shiga Plant
Senior Manager
Polyester Film Production Department
Toshiyuki Ino

Unlike reinforcement frames, the greatest strength of Endwall is that it can be used for products of many different sizes. It can also be used for products for which cleanliness is important because Endwall is washable. In addition, it has a high cost-benefit performance because it can be used repeatedly and can be stored by stacking in limited space. We see these as Endwall's unique characteristics.



Safety, QA and (quality) the Environment



Safety

Aiming at zero occupational injuries and accidents.

MCLC is seriously taking the preventive actions to eliminate the occupational injuries and accidents of our employees including subcontractors. We have also established the comprehensive system for risk management in case of emergency by the installation of the materials and equipment to prevent disasters at our facilities across Japan.



Quality Assurance

Aiming at zero quality problem.

Based on the expertise and technologies which we have developed over years from packing to transportation of chemical products, we have been continuously taking the proactive actions together with subcontractors in order to achieve the high quality logistics which will satisfy the customers.



**Carrying confidence into the future
through responsible activities that ensure safety and quality.**

“Safety & Quality First !” “It is social responsibility as the company to harmonize with the environment.” Based on these company policies, we will build the company culture which can be trusted by customers and society. We will achieve KAITEKI logistics by providing the customers and society with the high quality logistics.



Environment

Aiming at KAITEKI environment.

We have been developing the energy saving program, higher efficiency and improvement of working environment. In order to reduce the emission of carbon dioxide, we have been making efforts to improve the unit consumption of transportation energy 1% per year by aggressively promoting the modal-shift using the JR freight containers and adopting the energy-saving ships using energy saving fin and carbon propellers.



LED lighting



Photovoltaic facilities



Energy-saving fin

